

Union County Recycling

What can I place in my recycling container?

ACCEPTABLE MATERIALS



PLASTIC BOTTLES & CONTAINERS

i Bottles coded with #1, #2 & #5



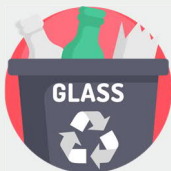
MIXED PAPER

i Newspaper, magazines, mail, etc.



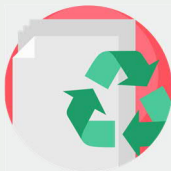
CANS

i Aluminum & steel (tin) cans and lids



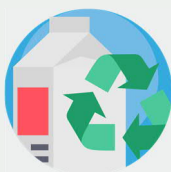
GLASS BOTTLES & JARS

i All sizes, shapes and colors



CARDBOARD

i Corrugated, cereal & pizza boxes, etc.



CARTONS

i Milk, juice & food cartons

Please remember... we don't accept plastic bags

Union County Recycling

What cannot go in my recycling container?

UNACCEPTABLE MATERIALS



PLASTIC BAGS & PLASTIC WARE

- i** These items are not recyclable
Visit www.plasticfilmrecycling.org for more information



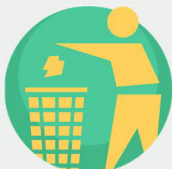
STYROFOAM

- i** Styrofoam cannot be recycled curbside
Speak to your local Dept. of Public Works for more information



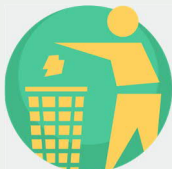
DISHWARE, GLASS & MIRRORS

- i** These items can go out with your regular trash



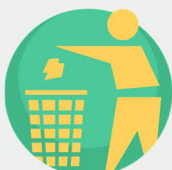
DIRTY PIZZA BOXES

- i** Pizza boxes with leftover food or grease cannot be recycled



SHREDDED PAPER

- i** Shredded paper can go out with your regular trash or at your local town's recycling event



POTS, PANS & SMALL APPLIANCES

- i** These items are not recyclable
Speak to your local Dept. of Public Works for more information

Please remember... we don't accept plastic bags